





Assignment 5.4 – Solving Equations and Inequalities


Solve and graph each.


1. $n + 5 \geq 32$ 

2. $x - 4 > 1$ 

3. $42 > -11 + t$ 

4. $7x - 5 \leq 9$ 

5. $\frac{n}{4} + 8 \leq 1$ 

6. $2(x - 4) + 6 > x - 10$ 

*** When you multiply or divide by a negative number *switch* the inequality sign.

Solve:

7. $3x < 12$

8. $-3x < 12$

9. $\frac{m}{5} \geq -6$

10. $\frac{m}{-5} \geq -6$

Solve and graph.

11. $-2x - 8 > 16$

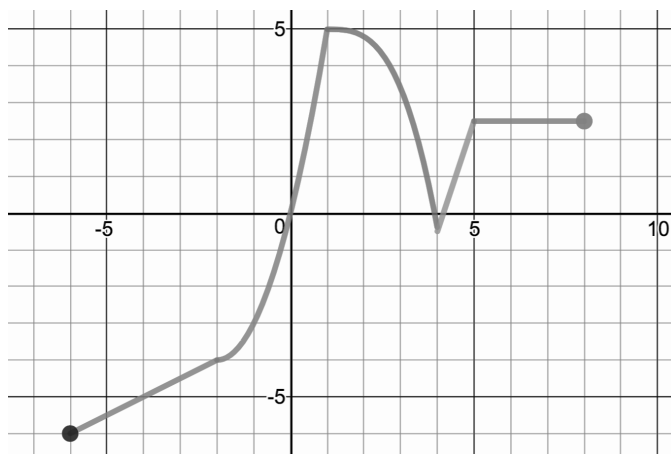


12. $\frac{x}{-3} + 10 \leq 7$



Refresh your memory:

13.



Intervals of Increase:

Intervals of Decrease:

Constant Intervals:

Domain:

Range: